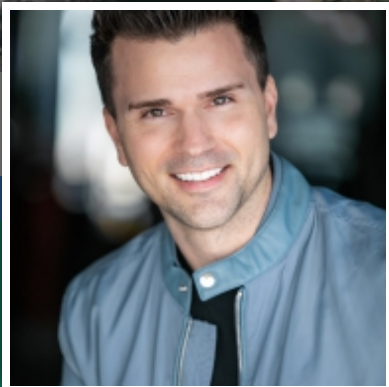




SEND Network

Bellevue/Kenmore Washington



Jonah Easley

AWAKENING CHURCH

About the Family

Kathy and I were married in 2003 in Marietta, Ga. We have three children—Evan, Adele and Elijah.

About My Church Plant

In 2018, Awakening Church was planted in Bellevue, Wash., a suburban area of Seattle. Our vision is to be a catalyst for spiritual awakening in Bellevue and beyond. This vision is lived out through the four “Ds: Depending on Jesus, Displaying His love, Declaring the gospel and Deploying to make disciples.

Find out how you can

Pray.

Participate.

Provide.

PRAY.

For churches as they prepare to send out missionaries and chaplains to push back lostness in North America.

For receptive hearts among the people in communities where missionaries and chaplains serve.

For churches and individuals to partner with missionaries and chaplains and to give of their time and talents.

For the Father to send more workers into His harvest to join missionaries.

PARTICIPATE

Connect as a Sending Church or a Supporting Church with a missionary's work.

Commit to long-term missions support with your missionary partner.

Be involved in supporting missionaries and their families.

Pray for missionaries.

PROVIDE

Many missionaries build a team to join their ministry in prayer, participation, and provision. These friends, family and churches support missionaries beyond the tithes and offerings given within the church plant. Visit sendnetwork.com/PlanterFunding for NAMB's policy on providing for church plants.

namb.net

Contact me at jonaheasley@gmail.com