



Katarina Izzi

GRACE HARBOR CHURCH - NEW BEDFORD

About the Family

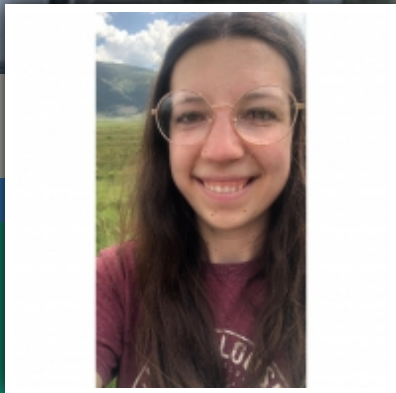
I am originally from South Jersey, a land of amazing pizza, beaches and an almost cult-like obsession with a convenience store called Wawa. I moved to New England in 2013 to study culinary arts at Johnson and Wales. Though I don't cook professionally anymore, I still love to cook and bake for my family and friends and have been known occasionally to go over the top.

My husband, Anthony, and I were elaborately set up by two mutual friends, and we decided to blend our distinctive, awkward natures into one. We got married in March of 2020, one day before the COVID-19 shut down, and moved to New Bedford, Mass. We love all outdoor activities, Celtics basketball, and making fun of each other (out of love, of course!). And our family is growing. We are expecting our first child in October 2022!

About My Church Plant

My husband and I had both been members of Grace Harbor in Providence, R.I., for years when several families hailing from Texas joined the church with plans to plant a church in New Bedford. After much prayer, consideration and fellowship with those families, we decided to join the church plant and move to New Bedford, a place severely lacking in healthy churches and Christians. We had intended to join the plant as just members, but in April 2020 the pastor asked if I would be the administrative assistant.

Being on staff of a small, urban church plant has been sanctifying, rewarding and surprising. My job entails everything from creating spreadsheets, to having difficult conversations with church members about burnout, to leading a Bible study for teen girls. Behind the scenes operations work meets relational ministry and leadership.



Find out how you can

Pray.

Participate.

Provide.

PRAY.

Pray that God would send more workers to the harvest in New Bedford.
Pray for Grace Harbor as we expand our ministry and head toward future church planting.

Pray I would be faithful to my work and in entering into the hard and messy places of relational ministry with members, regular attenders and those who live in the neighborhood.

PARTICIPATE

Build relationships with missionaries and their families.
Send notes of encouragement.
Learn birthdays and anniversaries, so you can send gifts and cards.
Sign up to receive our prayer emails.
Financially support the ministry.

PROVIDE

Learn the ministry strategy and context, so you can provide relevant resources.
Support a missionary financially.